

CONVERSATION PIECE / TECHNICAL RIDER



CHOREOGRAPHER

Petra Sabisch
Bötzowstraße 18
10407 Berlin
+49 (0)30 40 39 32 92
+49 (0)16 35 02 73 44 (cellular)
Petra.Sabisch(at)gmx.net

PRODUCTION

tanzbaustelle
Gabi Beier
Varnhagenstr. 11
10439 Berlin
+49-(0)30-36 46 58 02
tanzbaustelle(at)gmx.net

LIGHT / TECHNICAL DIRECTION

Florian Bach
Eichenstrasse 4
D-12435 Berlin
florian(at)artamis.org

please replace (at) by @

Please note

This technical rider is the final version.
All elements in **bold** are **indispensable**.
The Technical rider is part of the contract.
Light plan & screen plan are part of the technical rider.

Company	8 persons including: 1 Choreographer 5 Performer 1 Light designer 1 Manager
Duration	about 50 min.
Dressing rooms	Dressing room and drinking water
Stage	10m minimum opening of stage 10m minimum depth 5 m height minimum under the grid 0 % rake Upon agreement with the technical director, the performance can however be adapted to a smaller version.
Stage equipment	1 grey dance floor all over the stage 3 plastic chairs (provided by company) 1 standing wooden white screen on floor, 180 x 240 cm, see plan appended (has to be provided by the venue). White walls
Light equipment	The list below depends on the size and the configuration of the stage. It can be adapted after our technical director receives the technical plans of the venue. The light is controlled with a Lanbox, (brought by company). The theatre must provide a clean DMX 5 Pole data. 1 memory light board with in/out DMX for focus 15 x PC 1KW or Fresnels 3 x profiles <u>1kw 50°</u> 9 x 1KW Assymetrical floods. 21 Channels House light should be controlled with the board.
Filters	LEE 708/ LEE 119/ LEE 106 / LEE134 / LEE 251 Black Wrap / Black aluminium tape
Video	1 Video projector with VGA cable to connect to computer Minimum 2000 lumen ANSI
Sound	1 CD player connected to PA system minimum 1000W

Working schedules

The company arrives the day before the performance.

Evening of arrival:

Rigging Light
Set Dance floor

Morning/ Afternoon of performance day:

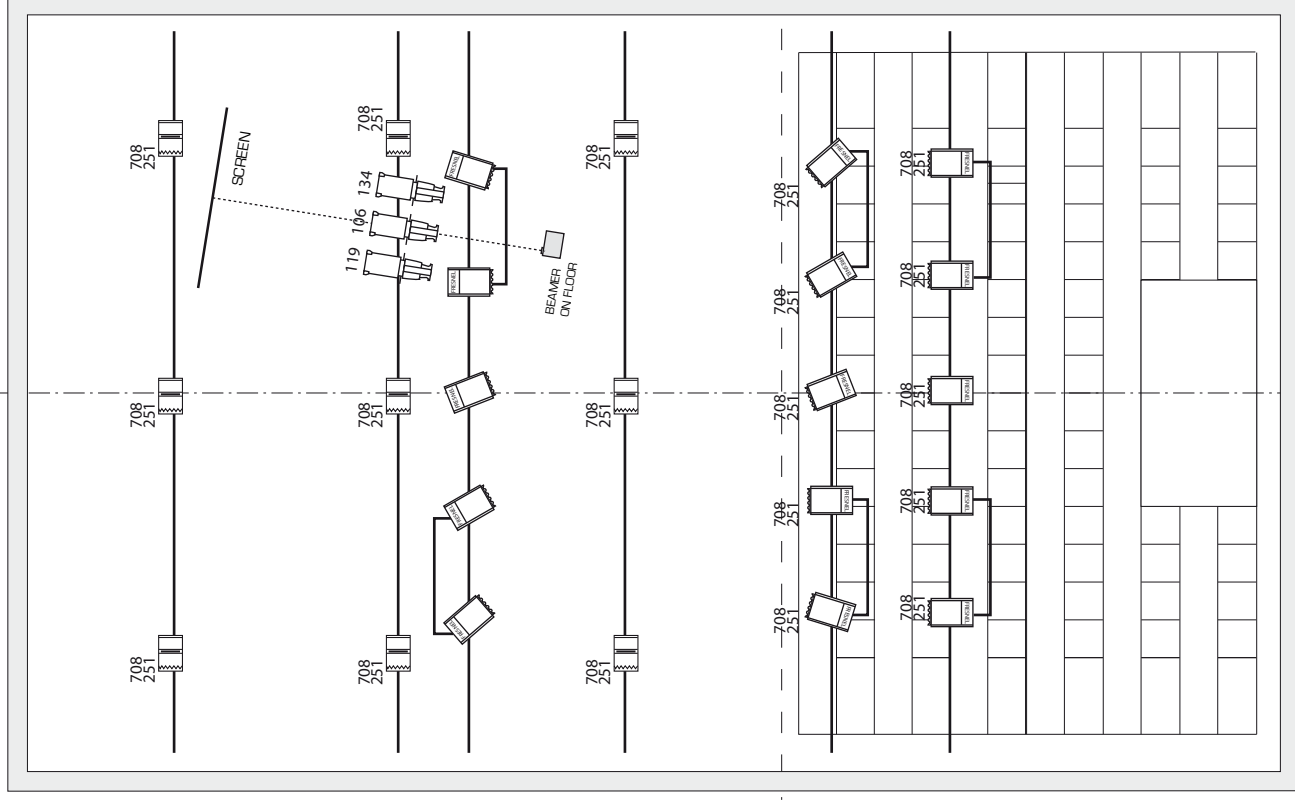
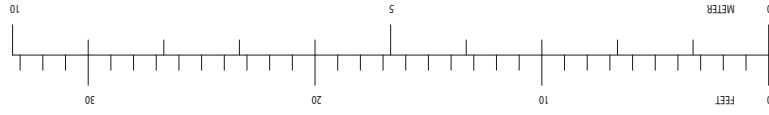
Light Focus
light corrections
Rehearsal

Evening of performance day:

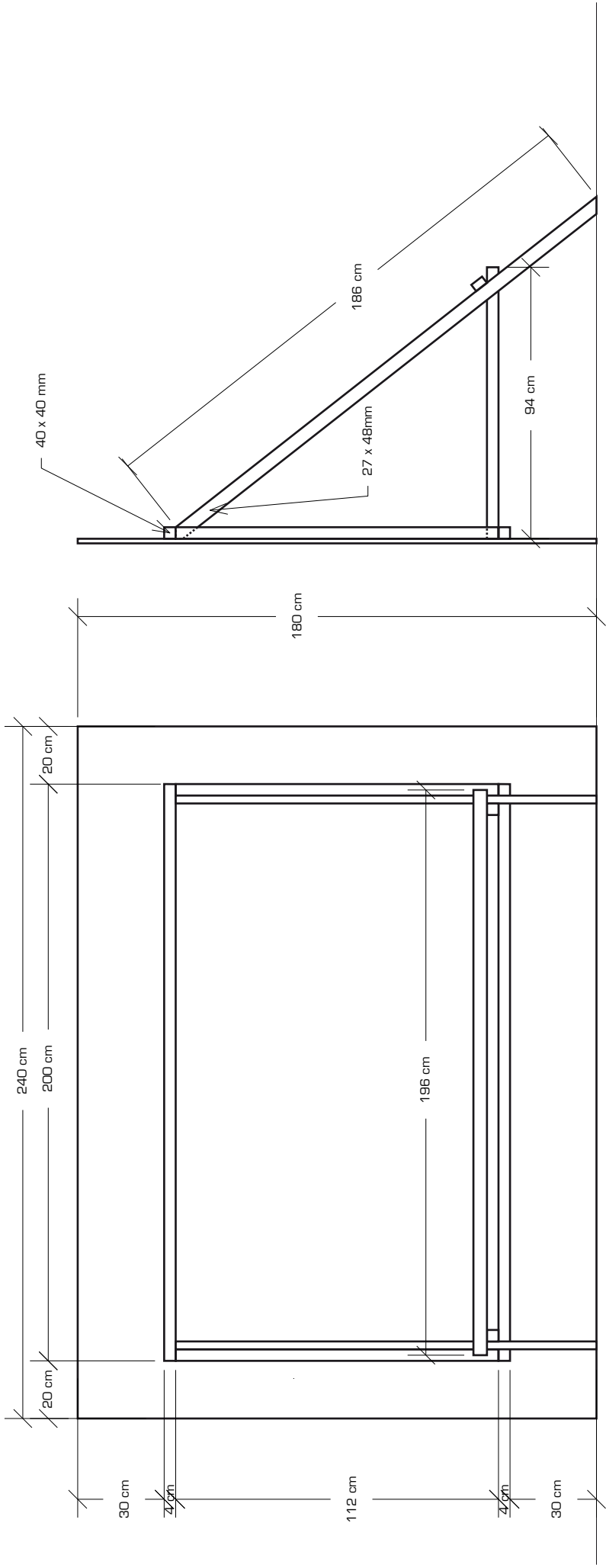
Performance
Strike down

<p>PETRA SABISCH CONVERSATION PIECE</p>	
<p>Lights : Florian Bach</p>	
<p>Scale : 1:100</p>	
<p>Contact: Petra Sabisch Bötzowstr. 18 10407 Berlin +49 30 40 39 32 92 +49 16 35 02 73 44 Petra.Sabisch(at)gmx.net</p>	
<p>Technical Direction Florian Bach HOME: +49 30 53 02 66 36 florian(at)artamis.org</p>	
<p>Version : 02/06/08</p>	

	9 X IDENTICAL ASS. FLOOD 1KW / 9 CHANNELS
	15 X IDENTICAL PC 1KW / 9 CHANNELS
	3 X IDENTICAL PROFILE 50° / 3 CHANNELS
<p>FILTERS: LEE 708 / LEE 251 / LEE119 / LEE106 / LEE134</p>	



FRONT STAGE



PETRA SABISCH / CONVERSATION PIECE
 PROJECTION SCREEN / PLAN

PLAN 1:20

ALL SCREW FROM BEHIND, NO SCREW ON FRONT SURFACE.